

# HUTCHINSON TOWNSHIP

Each township has six files containing six sections in each, and one file containing all 36 sections.

Hutchinson01to06.pdf  
Hutchinson07to12.pdf  
Hutchinson13to18.pdf  
Hutchinson19to24.pdf  
Hutchinson25to30.pdf  
Hutchinson31to36.pdf  
HutchinsonAll36.pdf

The points are listed starting with the point above the SE corner and continuing in a counter-clockwise rotation around the section. This normally begins with the East point, Northeast, then North, but may also include Witness Corners, and/or Meander Corners.

## **Definitions**

**Witness Corner:** A witness corner “stands in” when the true corner cannot be monumented or occupied because of difficult terrain or obstruction of the corner sight. The witness corner must be on the section line and is usually 5 or 10 chains away from the true corner.

**Meander Corner:** The intersection of a township, range, or section line and the banks of a navigable stream or meandering body of water.

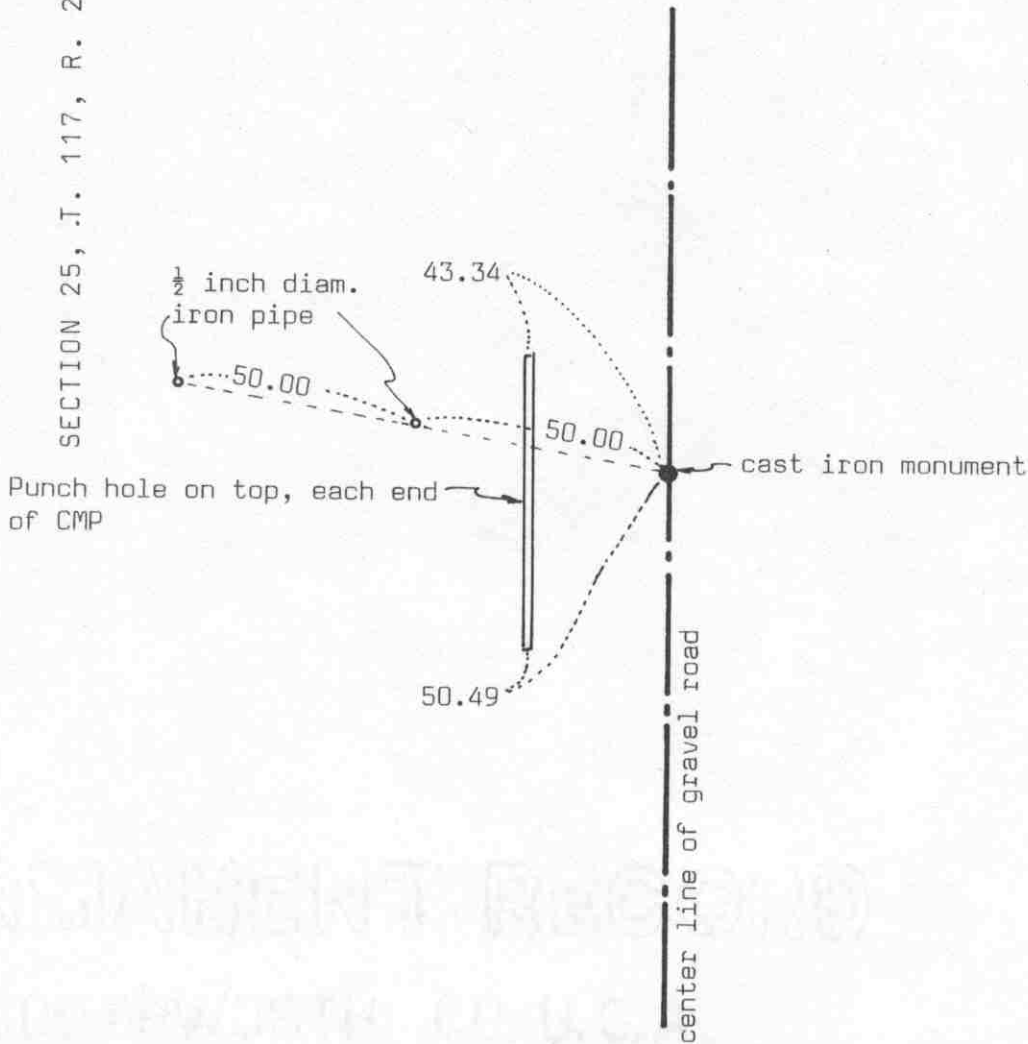
# Certificate of Location of Government Corner

## SKETCH OF REFERENCE TIES (NO SCALE)



SECTION 25, T. 117, R. 29

SECTION 30, T. 117, R. 28



### Statement of evidence relative to this corner location on sheet 2

I hereby certify that this document was prepared by me or under my direct supervision.

Willard Pellinen

Willard Pellinen  
McLeod County Surveyor  
License No. 9626

Date 5/12/90

### OFFICE OF THE COUNTY RECORDER MCLEOD COUNTY, MINNESOTA.

I hereby certify that this document was filed in this office at 8:30 o'clock A.M. on the 7th day of June, 1990.

Armer Ostlie, County Recorder

By \_\_\_\_\_, Deputy

Document No. 233822

## Certificate of Location of Government Corner

August, 1855. John Ryan of the General Land Office established this corner. He set a post with reference ties to 2 trees.

October 2, 1970. McCombs Knutson Associates (Dickman Knutson, county surveyor) dug for the corner, John Tupa from Hutchinson with a backhoe. They found a stone, 12 inches by 6 inches, with a sharp point up, down  $3\frac{1}{2}$  feet below the road surface.

October 13, 1970. Knutson set a McLeod County cast iron monument at the location of the found stone.

April 10, 1981. We found the cast iron monument in good condition but the reference ties had been destroyed. We took new reference ties.

July 30, 1981. We measured the east line of Section 25 and found the quarter corner to be within 12 feet of being half way between the section corners.

January 23, 1986. We found the monument ok but the ties destroyed. We retied the monument.

June 19, 1986. The monument had been destroyed by road construction. We set a new monument and took new ties.

April 3, 1989. We found the monument in good condition 4 inches below the road surface and the reference ties good.

Northeast corner, Section 25, Township 117 North, Range 29 West

# Certificate of Location of Government Corner

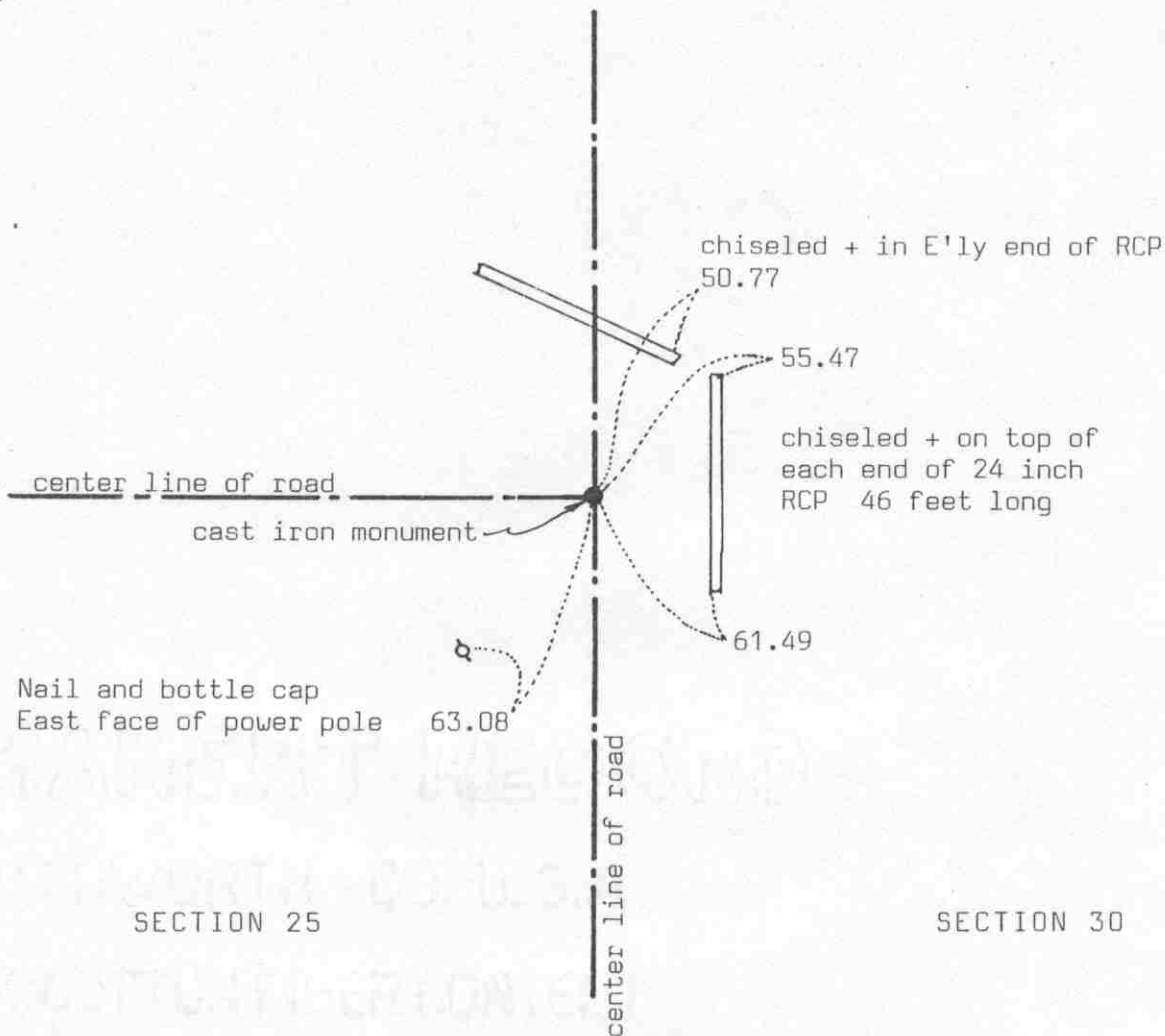
## SKETCH OF REFERENCE TIES (NO SCALE)

SECTION 24

SECTION 19

T 117 N, R 29 W

T 117 N, R 28 W



### Statement of evidence relative to this corner location on sheet 2

I hereby certify that this document was prepared by me or under my direct supervision.

Willard Pellinen

Willard Pellinen  
McLeod County Surveyor  
License No. 9626

Date 5/14/90

### OFFICE OF THE COUNTY RECORDER MCLEOD COUNTY, MINNESOTA.

I hereby certify that this document was filed in this office at 8:30 o'clock A.M. on the 7th day of June, 19 90.

Carmin Ostlie, County Recorder

By \_\_\_\_\_, Deputy

Document No. 233821

## Certificate of Location of Government Corner

August, 1855. John Ryan of the General Land Office surveyed the east line of Township 117, Range 29, but he did not establish the northeast corner of Section 25. He states "point for corner in marsh but unfit for the establishment of the same". He set a witness corner 3.30 chains north of the section corner.

July 9, 1969. McCombs Knutson Associates (Dickman Knutson, county surveyor) set a temporary corner on the center line intersection of the roads as per testimony by adjoining land owners.

1970. Knutson dug for the corner, John Tupa from Hutchinson with a backhoe) but found nothing. Knutson set a cast iron monument on the center line intersection of the roads and took reference ties.

April 10, 1985. We found the cast iron monument in good condition and took more reference ties. The road is to be rebuilt.

January 23, 1986. We found the monument destroyed by road construction. Using the reference ties taken before construction, we set a spike at the corner and took new reference ties.

June 19, 1986. We reset a monument at the corner with a  $\frac{1}{2}$  inch by 14 inch iron pipe below the monument.

April 3, 1989. We found the monument in good condition and the reference ties good.

There being no evidence to the contrary, we must accept the monument set by Knutson as marking the correct location of the section corner.

# Certificate of Location of Government Corner

## SKETCH OF REFERENCE TIES

(NO SCALE)

SECTION 24

fence



Nail and disc in 6 inch tree  
Up 3 feet

67.76

cast iron monument

center line of gravel road

257.13

Nail and bottle cap  
North face of power pole

124.48

Nail and bottle cap  
North face of power pole

fence

SECTION 25

Statement of evidence relative to this corner location on sheet 2

I hereby certify that this document was prepared by me or under my direct supervision.

Willard Pellinen

Willard Pellinen  
McLeod County Surveyor  
License No. 9626

Date 4/3/90

OFFICE OF THE COUNTY RECORDER  
MCLEOD COUNTY, MINNESOTA.

I hereby certify that this document was filed in this office at 4 o'clock P.M. on the 2nd day of May, 1990.

Carmen Ostlie, County Recorder

By \_\_\_\_\_, Deputy

Document No. 233094

NORTH QUARTER            corner, Section 25, Township 117 North, Range 29 West

## Certificate of Location of Government Corner

This corner was originally established in 1856 by A.H.Runyon of the Government Land Office. He set a post and had reference ties to 2 bearing trees.

February 17, 1966. Roy Hansen, surveyor, found an iron pipe at the corner.

1968. Lew Merrill, former county surveyor, said ther is a large iron pipe at the corner, used by him and by E.L.Higgins.

July 9, 1969. McCombs Knutson Associates, Dickman Knutson, county surveyor, found a  $1\frac{1}{2}$  inch diameter iron pipe at the corner. They replaced the iron pipe with a McLeod County cast iron monument and took reference ties.

November 11, 1988. We found the cast iron monument in good condition. We measured the north line of Section 25 and found the north quarter corner to be within  $5\frac{1}{2}$  feet of being half way between the section corners and about 6 feet north of a straight line.

March 20, 1989. We found the monument down 5 inches below the surface of the road, but all the reference ties were destroyed. We took new reference ties.

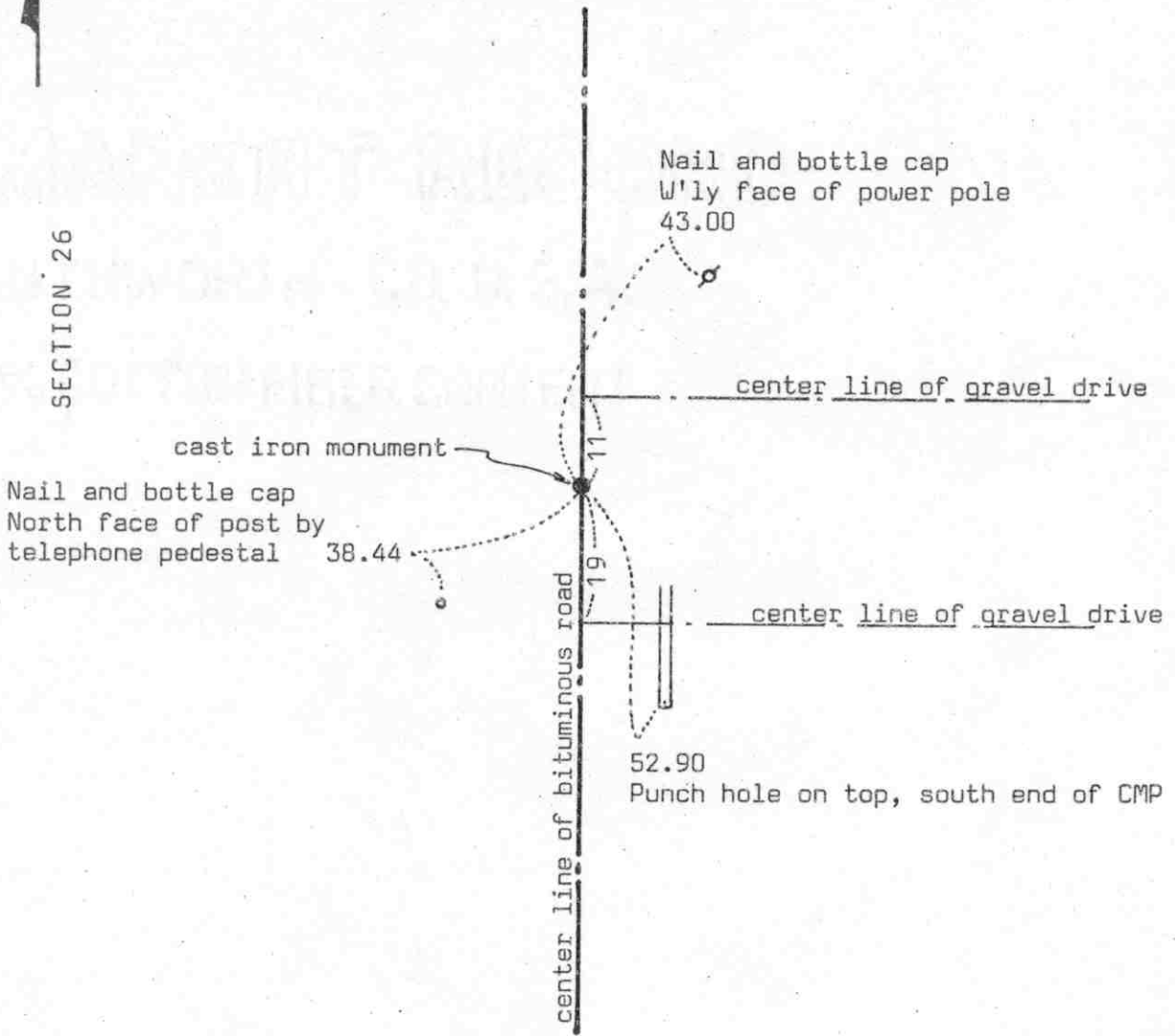
We believe the iron pipe found by Roy Hansen in 1966 and by Knutson in 1969 and later the monument set by Knutson have perpetuated the correct location ot the quarter corner.

# Certificate of Location of Government Corner



## SKETCH OF REFERENCE TIES

(NO SCALE)



Statement of evidence relative to this corner location on sheet 2

I hereby certify that this document was prepared by me or under my direct supervision.

Willard Pellinen

Willard Pellinen  
McLeod County Surveyor  
License No. 9626

Date 4/8/90

OFFICE OF THE COUNTY RECORDER  
MCLEOD COUNTY, MINNESOTA.

I hereby certify that this document was filed in this office at 8:30 o'clock A.M. on the 22nd day of May 1990.

Carmen Ostlie, County Recorder

By \_\_\_\_\_, Deputy

Document No. 233485



## Certificate of Location of Government Corner

May, 1856. A.H.Runyon of the General Land Office established this corner. He set a post and had reference ties to 2 bearing trees.

1899. E.L.Higgins' field notes show a distance of 2626.7 feet to the northeast corner and 2626.7 feet to the southeast corner of Section 26.

February 17, 1966. Roy Hanson, surveyor, found an iron pipe at the corner. (survey in Northwest Quarter of Section 25)

July 9, 1969. McCombs Knutson Associates (Dickman Knutson, county surveyor) found a  $\frac{1}{2}$  inch diameter iron pipe at the corner. (survey in the Southwest Quarter of Section 25)

June 19, 1974. Knutson replaced the iron pipe with a McLeod County cast iron monument and took reference ties.

August, 1979. We measured the east line of Section 26 and a distance of 2624.55 to the northeast corner and a distance of 2624.36 to the southeast corner of Section 26.

April 3, 1989. All the reference ties were gone. We found the cast iron monument in good condition, top flush with the surface of the bituminous road. We took available reference ties.

We accept the iron pipe found by Hanson and Knutson as having perpetuated the correct location of the quarter corner.

### Certificate of Location of Government Corner

SKETCH OF REFERENCE TIES  
(NO SCALE)



SECTION 23

SECTION 24

Nail and disc  
SW face of power pole  
50.62

Nail and disc  
NW face of guy pole  
56.89

cast iron monument

center line of road

64.10  
Nail and disc  
East face of guy pole

50.08  
Nail and disc  
NE face of power pole

SECTION 26

SECTION 25

center line of road

Statement of evidence relative to this corner location on sheet 2

I hereby certify that this document was prepared by me or under my direct supervision.

OFFICE OF THE COUNTY RECORDER  
MCLEOD COUNTY, MINNESOTA.

Willard Pellinen

Willard Pellinen  
McLeod County Surveyor  
License No. 9626

I hereby certify that this document was filed in this office at 4 o'clock P.M. on the 4th day of April, 1990.

Date 4/2/90

Carmen Ostlie, County Recorder

By \_\_\_\_\_, Deputy

Document No. 232640

NORTHEAST            corner, Section 26, Township 117 North, Range 29 West

## Certificate of Location of Government Corner

This corner was originally established by A.H.Runyon of the Government Land Office in 1856. He set a post and had reference ties to 4 bearing trees.

July, 1969. McCombs Knutson Associates, Dickman Knutson, county surveyor, chained the east line of Section 26 and found an iron stake at the northeast corner.

June 19, 1974. Knutson replaced the iron stake with a McLeod County cast iron monument and took reference ties. 1899 survey by E.L.Higgins shows an iron stake at this corner.

January 1988. We found the monument in good condition. We measured the east line of Section 26 and had a distance of 2624.55 feet from the northeast corner to the east quarter corner, compared with a distance of 2625.5 by Higgins in 1899. We measured 2624.36 between the east quarter corner and the southeast corner compared with a distance of 2625.5 by Higgins.

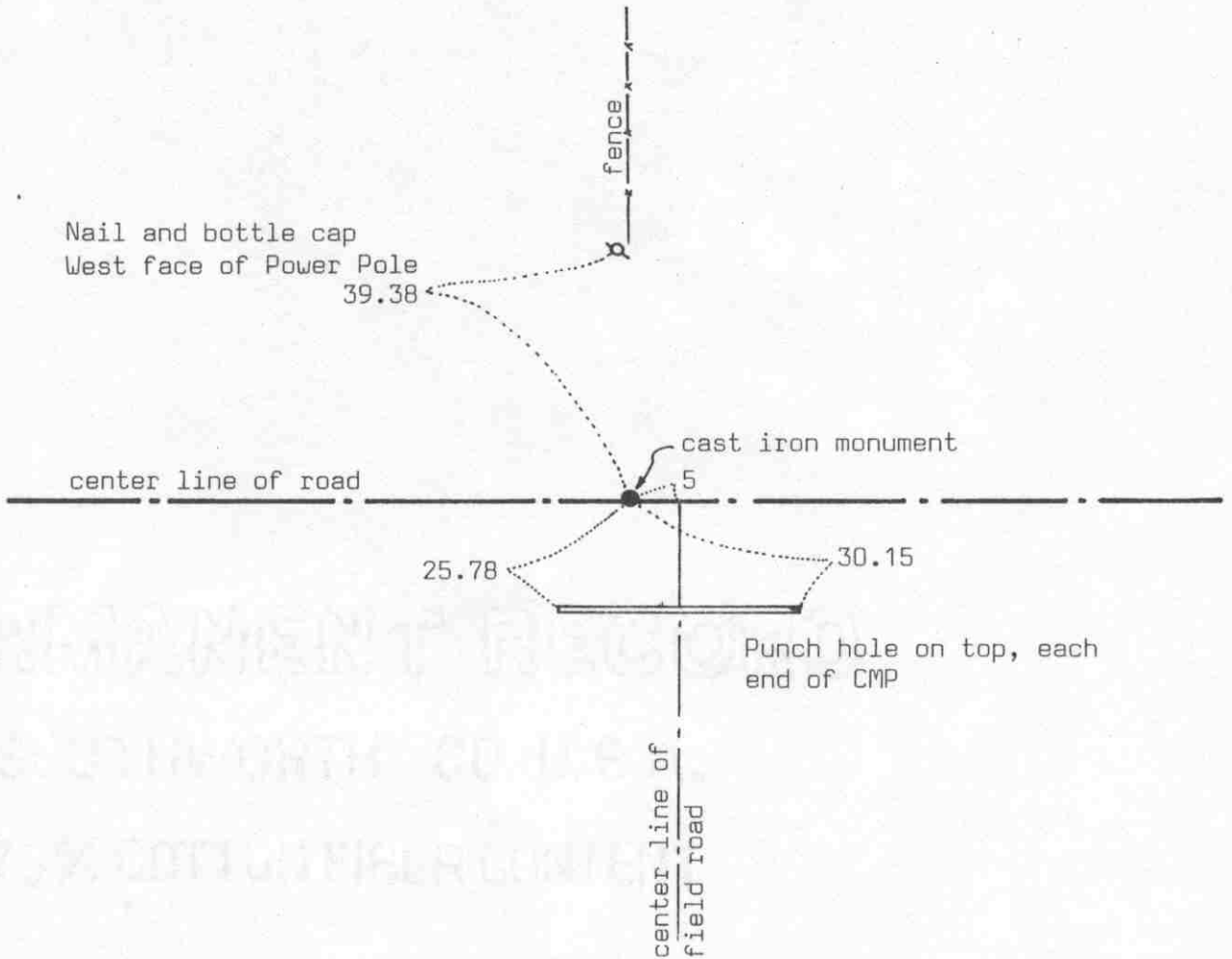
March 20, 1989. We found the monument in good condition and the reference ties good.

We accept the cast iron monument as the correct location of the section corner because it perpetuates the location of an older monument which was found by Higgins in 1899. It also fits long standing occupation lines, the center lines of the north-south and the east-west roads.

# Certificate of Location of Government Corner

## SKETCH OF REFERENCE TIES (NO SCALE)

SECTION 23



SECTION 26

Statement of evidence relative to this corner location on sheet 2

I hereby certify that this document was prepared by me or under my direct supervision.

Willard Pellinen

Willard Pellinen  
McLeod County Surveyor  
License No. 9626

Date 5/12/90

OFFICE OF THE COUNTY RECORDER  
MCLEOD COUNTY, MINNESOTA.

I hereby certify that this document was filed in this office at 8:30 o'clock A.M. on the 7th day of June, 1990.

Carmen Hotlie, County Recorder

By \_\_\_\_\_, Deputy

Document No. 233823

NORTH QUARTER corner, Section 26, Township 117 North, Range 29 West

## Certificate of Location of Government Corner

May, 1856. A.H.Runyon of the G.L.O. established this corner. He set a post and had reference ties to 2 trees.

October 6, 1899. E.L.Higgins, county surveyor, found an old post at the corner and measured 2640 feet to the northwest corner of Section 26.

May, 1926. Carlisle Madson, Sr., county surveyor, shows a fence line running north and south from the corner.

November 12, 1926. Higgins found an iron stake at the corner.

January 10, 1974. McCombs Knutson Associates (Dickman Knutson, county surveyor) talked with Stanley Svoboda, 50 years old, in the Southeast Quarter of Section 23 all his life. Mr. Svoboda said the corner is in the center line of the road, in line with the fence running north. Mr. Anthony Fimon, 62 years old and has lived in the Southwest Quarter of Section 23 all his life, agrees.

February 28, 1974. McCombs-Knutson measured the north line of Section 26 and set a temporary quarter corner in the center line of the road on the extension of the fence from the north.

May 15, 1974. Knutson dug for the corner, John Tupa from Hutchinson with a backhoe. Found an iron pipe down  $3\frac{1}{2}$  feet below the surface of the road.

June 19, 1974. Knutson placed a McLeod County cast iron monument at the corner and took reference ties.

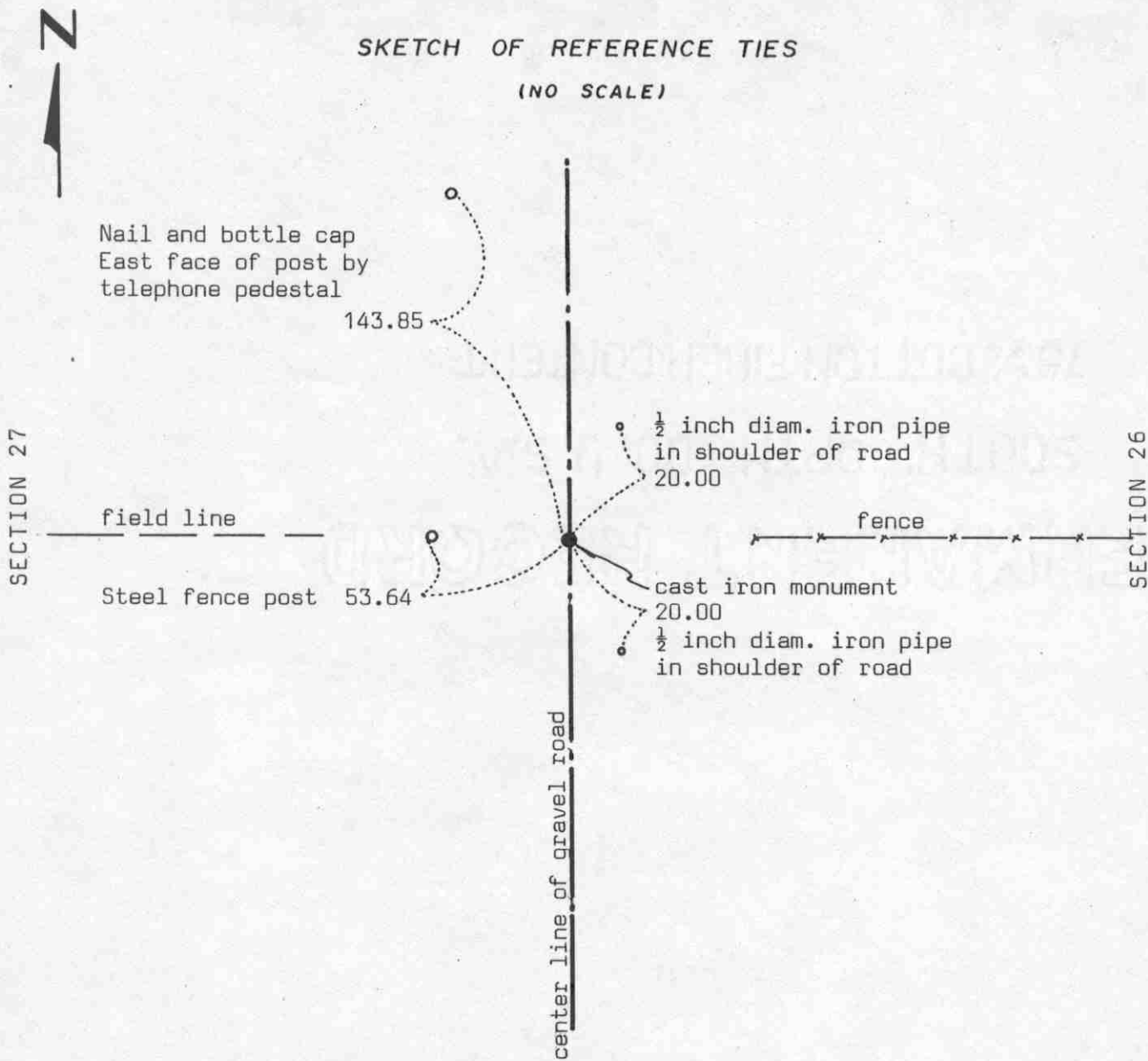
August, 1979. We found the monument in good condition and measured the north line of the section. We measured 2639.86 feet to the northwest corner compared with 2640 in 1899.

April 3, 1989. We found the monument in good condition and the reference ties good.

We believe the iron pipe found by Knutson in 1974 is the same iron found by Higgins in 1926, which was in the same location as the old post found by Higgins in 1898, and that it has perpetuated the correct location of the quarter corner.

# Certificate of Location of Government Corner

SKETCH OF REFERENCE TIES  
(NO SCALE)



Statement of evidence relative to this corner location on sheet 2

I hereby certify that this document was prepared by me or under my direct supervision.

Willard Pellinen

Willard Pellinen  
McLeod County Surveyor  
License No. 9626

Date 5/11/90

OFFICE OF THE COUNTY RECORDER  
MCLEOD COUNTY, MINNESOTA.

I hereby certify that this document was filed in this office at 8:30 o'clock A.M. on the 22nd day of May 1990.

Armenia Belie, County Recorder

By \_\_\_\_\_, Deputy

Document No. 233486

## Certificate of Location of Government Corner

May, 1856. This corner was established by A.H.Runyon of the General Land Office. He set a post and had reference ties to 2 trees.

August, 1898. E.L.Higgins, county surveyor, surveyed the road between Sections 26 and 27. He set corner on the center line of the road in line with fences east and west.

May 20, 1926. Higgins set an iron bar,  $1\frac{1}{4}$  inches by 6 feet long at the corner. He had a distance of 2554.5 to the northeast corner of Section 27 and 2629.5 to the southeast corner.

January 11, 1974. Joe Murphy, 43 years old, in the South-east Quarter of Section 27 all his life, says there used to be a fence running west where the field line is now, still a few steel fence posts on line. Ruth Jerabek, 65, in the Northwest Quarter of Section 26 for 34 years, said the farm was surveyed before they moved in and the fence line running east is on the east qest quarter line.

February 28. 1974. McCombs Knutson Associates (Dickman Knutson, county surveyor) measured the east line of Section 27 and set a temporary quarter corner on the center line of the road in line with fences east and west.

August 6, 1974. Knutson dug for the corner and found a flat iron bar down 3 feet below the road surface. Knutson set a McLeod County cast iron monument over the found iron.

April 3, 1989. We found the monument in good condition and the reference ties taken in 1974 still good.

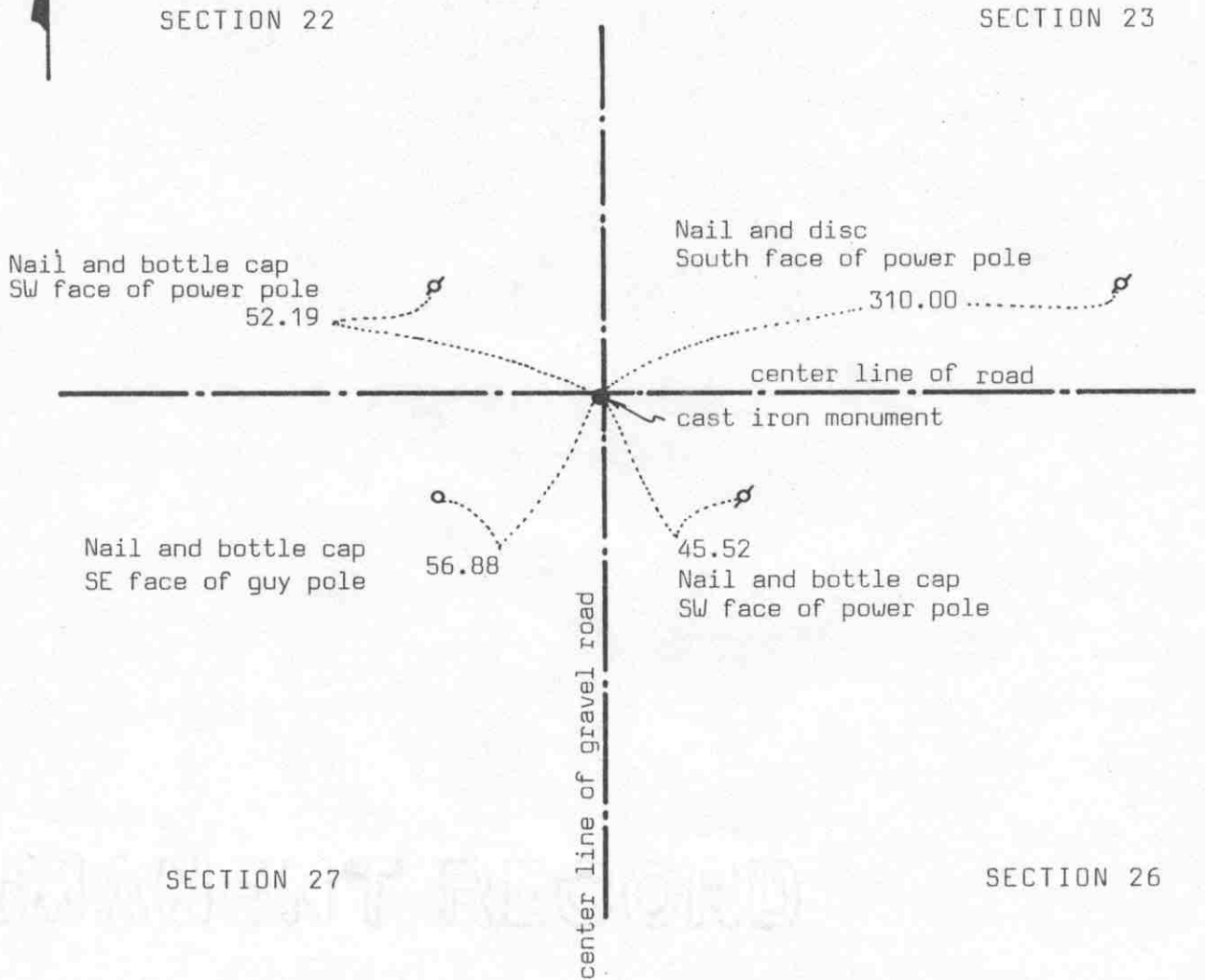
We accept the iron bar found by Knutson and later the cast iron monument set by Knutson as having perpetuated the correct location of the quarter corner.

# Certificate of Location of Government Corner



## SKETCH OF REFERENCE TIES

(NO SCALE)



Statement of evidence relative to this corner location on sheet 2

I hereby certify that this document was prepared by me or under my direct supervision.

Willard Pellinen

Willard Pellinen  
McLeod County Surveyor  
License No. 9626

Date 5/12/90

OFFICE OF THE COUNTY RECORDER  
MCLEOD COUNTY, MINNESOTA.

I hereby certify that this document was filed in this office at 8:30 o'clock A.M. on the 7th day of June, 1990.

Carmen Ostlie, County Recorder

By \_\_\_\_\_, Deputy

Document No. 233824



## Certificate of Location of Government Corner

May, 1856. This corner was established by the General Land Office. A.H.Runyon set a post and had reference ties to 4 bearing trees.

1898. E.L.Higgins, county surveyor, used center line intersection of the roads as the section corner. He had a distance of 2640 feet to the north quarter corner of Section 26, 5232 feet to the northwest corner of Section 27, 5265 feet to the northeast corner of Section 22 and 2555 feet to the east quarter corner of Section 27.

May 20, 1926. Higgins found an iron post set by C.Madson 12 feet south and 12 feet west of the center line intersection. He set an iron strip at the center line intersection of the roads, the same location he used in 1898.

February 28, 1974. McCombs Knutson Associates (Dickman Knutson, county surveyor) set a temporary corner at the center line intersection of the roads.

August 6, 1974. Knutson found an iron monument down  $2\frac{1}{2}$  feet below the road surface and set a McLeod County cast iron monument over the found monument and took reference ties.

April 1, 1986. We set a PK nail over the monument at the surface of the bituminous road using the reference ties.

April 3, 1989. We found the PK nail and the reference ties good.

August, 1979. We measured 2639.86 feet to the north quarter corner of Section 26 compared with 2640 feet by Higgins in 1898. We measured 2553.87 feet to the east quarter corner of Section 27 compared with 2555 in 1898.

We believe the iron monument found by Knutson is in the same location as the corner set by Higgins in 1898 and in 1926 and has perpetuated the correct location of the section corner.

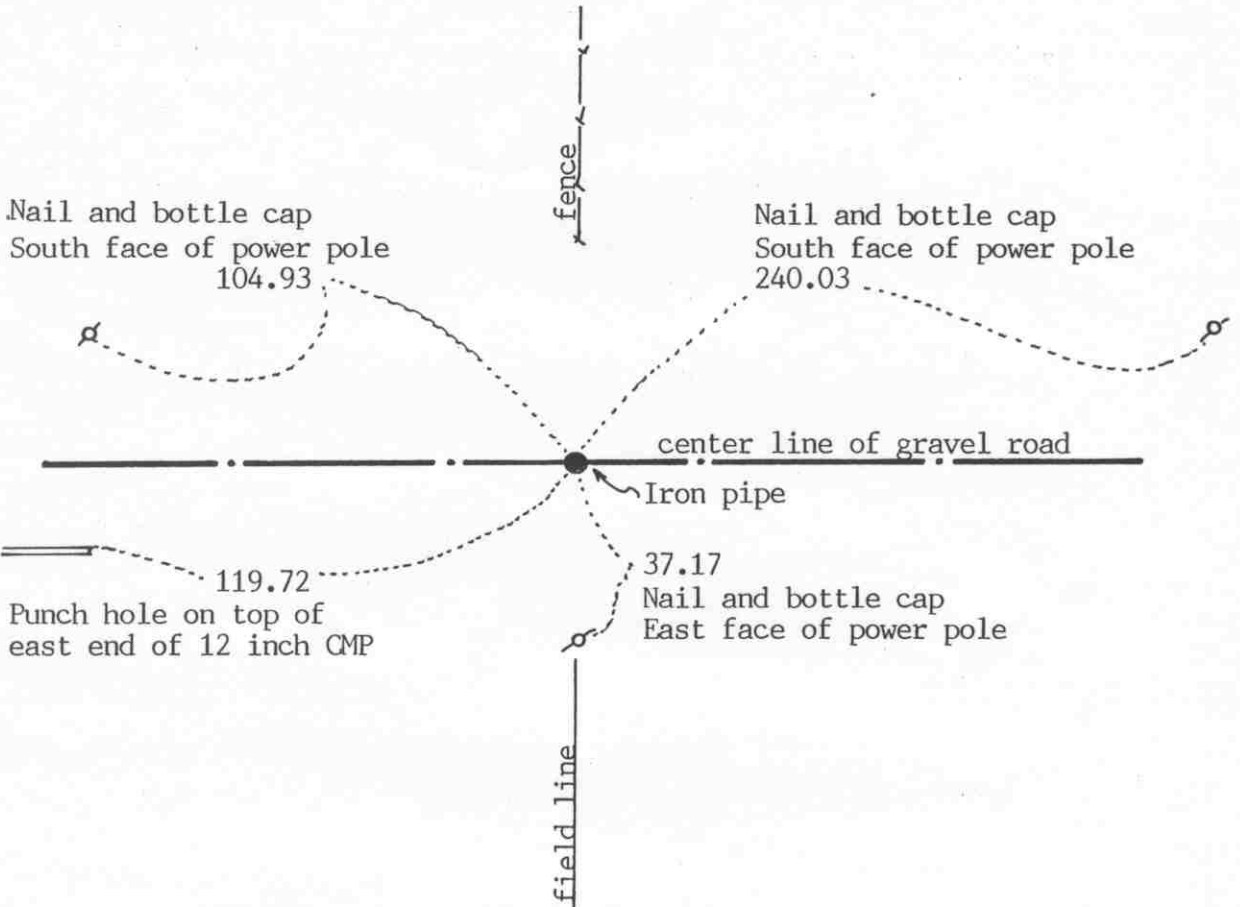
NORTH QUARTER corner, Section 27, Township 117 North, Range 29 West

# Certificate of Location of Government Corner

SKETCH OF REFERENCE TIES

(NO SCALE)

SECTION 22



SECTION 27

Statement of evidence relative to this corner location on sheet 2

I hereby certify that this document was prepared by me or under my direct supervision.

Willard Pellinen

Willard Pellinen  
McLeod County Surveyor  
License No. 9626

Date Sept. 24, 1993

OFFICE OF THE COUNTY RECORDER  
MCLEOD COUNTY, MINNESOTA.

I hereby certify that this document was filed in this office at 2 o'clock P.M. on the 5th day of Oct, 1993.

Carmen Estlie Quader, County Recorder

By \_\_\_\_\_, Deputy

Document No. 255184

## Certificate of Location of Government Corner

May, 1856. A.H.Runyon of the General Land Office established this corner. He set a post and had reference ties to 2 trees.

August, 1898. E.L.Higgins, county surveyor, measured the north line of Section 27 and had a distance of 5232 feet from the northeast corner to the northwest corner.

May 20, 1926. Higgins used the center line of the road and fences north and south for the quarter corner. He measured 2615 feet to the northeast corner of the section.

June 1, 1926. Carlisle Madson, Sr., county surveyor, set an iron pipe with a brass cap at the corner. He also had a distance of 2615 feet to the northeast corner.

February 27, 1974. McCombs Knutson Associates, Dickman Knutson, county surveyor, measured the north line of Section 27 and set a temporary corner on the center line of the road in line with fences north and south.

August 12, 1974. Knutson dug for the corner and found an iron pipe with a McLeod County brass cap on top down  $2\frac{1}{2}$  feet below the road surface. Knutson set a McLeod County cast iron monument over the found monument and took reference ties. They measured within  $\frac{1}{2}$  foot of the 1926 distances by Higgins to the northeast and northwest corners of the section.

April 3, 1989. We found the monument in good condition and the reference ties good.

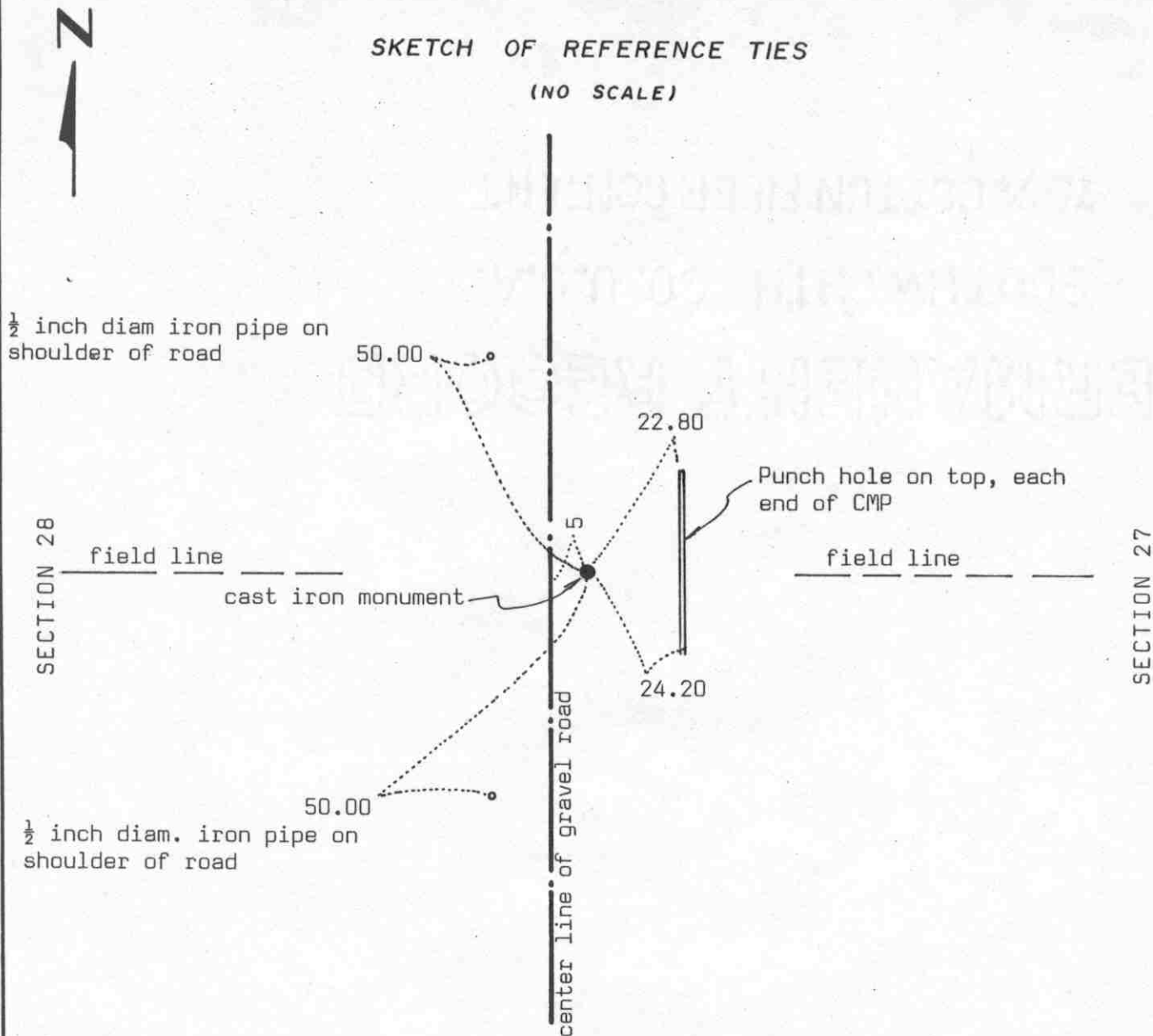
The cast iron monument is accepted as the correct position of the quarter corner. It perpetuates the location of the monument set by Madson in 1926 and also the location used by Higgins in 1926.

July 30, 1993. Monument has been destroyed by road construction. We reset an iron pipe at the corner using information from a survey done previously in Section 27. We took available reference ties.

# Certificate of Location of Government Corner

## SKETCH OF REFERENCE TIES

(NO SCALE)



Statement of evidence relative to this corner location on sheet 2

I hereby certify that this document was prepared by me or under my direct supervision.

Willard Pellinen

Willard Pellinen  
McLeod County Surveyor  
License No. 9626

Date 5/11/90

OFFICE OF THE COUNTY RECORDER  
MCLEOD COUNTY, MINNESOTA.

I hereby certify that this document was filed in this office at 8:30 o'clock A.M. on the 22nd day of May, 1990.

Carmen Ostlie, County Recorder

By \_\_\_\_\_, Deputy

Document No. 233488

EAST QUARTER corner, Section 28, Township 117 North, Range 29 West

## Certificate of Location of Government Corner

May, 1856. This corner was established by A.H.Runyon of the General Land Office. He set a post and had ties to 2 bearing trees.

March 27, 1903. Survey notes by E.L.Higgins shows a distance of 2610.6 feet to a fence intersection near the center of Section 28.

January 11, 1974. McCombs Knutson Associates (Dickman Knutson, county surveyor) talked with Art Kucera, 77 years old, in the Northwest Quarter of Section 27 since 1906. He said there is a steel post at the corner.

March 7, 1974. Knutson measured the east line of Section 28 and set a temporary quarter corner in the center of a gravel road and in line with a field line to the west. Knutson found a square iron monument near the fence intersection near the center of Section 28 and measured 2605 feet to the temporary quarter corner.

June 7, 1975. McCombs Knutson dug for the corner, John Tupa from Hutchinson with a backhoe. They found  $1\frac{1}{2}$  inch diameter iron pipe, top painted orange, down 3 feet below the surface of the road. This was about 5 feet east of the temporary corner which would place it about the same distance east of the fence intersection near the center of Section 28 as Higgins had in 1903.

July 22, 1975. Knutson set a McLeod County cast iron monument over the found iron pipe and took reference ties.

April 3, 1989. We found the monument in good condition and the reference ties good.

We feel the iron pipe is the same one used by by Higgins in 1903 and that it has perpetuated the correct location of the quarter corner.

# Certificate of Location of Government Corner



SKETCH OF REFERENCE TIES  
(NO SCALE)

SECTION 21

SECTION 22

Hole on top, each end of 12" CMP

Nail and bottle cap  
West face of power pole  
43.98

32.32

33.56

center line of gravel road

Nail and bottle cap  
SE face of power pole  
51.06

cast iron monument

58.05

center line of gravel road

Top, center, each end of 12" CMP

76.20

SECTION 28

SECTION 27

Statement of evidence relative to this corner location on sheet 2

I hereby certify that this document was prepared by me or under my direct supervision.

Willard Pellinen  
Willard Pellinen  
McLeod County Surveyor  
License No. 9626

Date 5/5/90

OFFICE OF THE COUNTY RECORDER  
MCLEOD COUNTY, MINNESOTA.

I hereby certify that this document was filed in this office at 8:30 o'clock A.M. on the 22nd day of May 1990.

Carmen Ostlie, County Recorder  
By \_\_\_\_\_, Deputy

Document No. 233487

NORTHEAST corner, Section 28, Township 117 North, Range 29 West

## Certificate of Location of Government Corner

1856. A.H.Runyon of the General Land Office established this corner. He set a post and had reference ties to 4 trees.

August, 1898. E.L.Higgins found an iron post at the corner.

March 17, 1903. Higgins had a distance of 2620.8 feet to the east quarter corner of Section 28.

April 20, 1972. Mr. Martin Jensen told McCombs Knutson Associates (Dickman Knutson, county surveyor) that there is an iron monument at the corner at the center line intersection of the roads. He was approximately 80 years old at the time. Knutson dug for the corner and found an iron monument about 2 feet below the surface of the road. This iron was 2 inches square at the top. Knutson set a McLeod County cast iron monument over the found monument and took available reference ties.

April, 1988. Using the reference ties we set a PK nail over the monument at the surface of the road.

April 3, 1989. We found the PK nail and the reference ties ok.

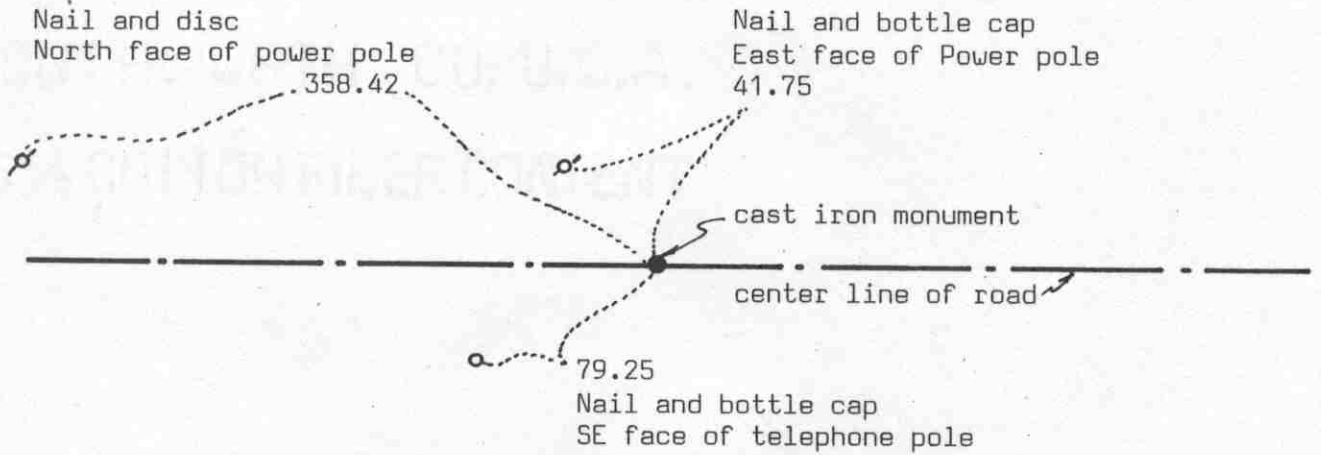
We feel the monument found by Knutson was the same iron post Higgins found in 1898 and that it has perpetuated the correct location of the section corner.

# Certificate of Location of Government Corner



## SKETCH OF REFERENCE TIES (NO SCALE)

SECTION 21



SECTION 28

Statement of evidence relative to this corner location on sheet 2

I hereby certify that this document was prepared by me or under my direct supervision.

Willard Pellinen

Willard Pellinen  
McLeod County Surveyor  
License No. 9626

Date 5/6/90

OFFICE OF THE COUNTY RECORDER  
MCLEOD COUNTY, MINNESOTA.

I hereby certify that this document was filed in this office at 8:30 o'clock A.M. on the 22nd day of May, 1990.

Carmen O'Brien, County Recorder

By \_\_\_\_\_, Deputy

Document No. 233489



## Certificate of Location of Government Corner

1856. This corner was established by the government. A.H.Runyon set a post and had reference ties to 2 trees.

1967. McCombs Knutson Associates (Dickman Knutson, county surveyor ) talked with Lew Merrill, former county surveyor. Mr. Merrill said there is an iron stake or re-rod at the corner.

April 18, 1972. Knutson found an iron stake down  $1\frac{1}{2}$  feet below the road surface. They replaced it with a McLeod County cast iron monument and took reference ties.

February 8, 1983. We used the reference ties and set a PK nail over the monument. We measured the north line of Section 28 and found the corner to be within 5 feet of being half way between the section corners, but about 37 feet north of a straight line. The northwest corner of Section 28 was not established by the government as it fell in a lake. Lake is now drained and we set the corner using lost methods.

April 3, 1989. We found the PK nail in the road and the reference ties good.

There being no evidence to the contrary, we must accept the iron stake found by Knutson as marking the correct location of the quarter corner.

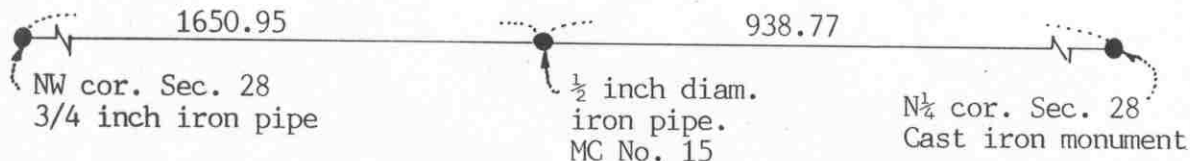
M.C. No. 15 corner, Section 28, Township 117 North, Range 29 West



# Certificate of Location of Government Corner

SKETCH OF REFERENCE TIES  
(NO SCALE)

SECTION 21



SECTION 28

Statement of evidence relative to this corner location on sheet 2

I hereby certify that this document was prepared by me or under my direct supervision.

Willard Pellinen  
Willard Pellinen  
McLeod County Surveyor  
License No. 9626

Date June 9, 1991

OFFICE OF THE COUNTY RECORDER  
MCLEOD COUNTY, MINNESOTA.

I hereby certify that this document was filed in this office at 9 o'clock A. M. on the 20th day of June, 1991.

Carmen Ostlie, County Recorder

By Thyllis Jopkowsk, Deputy

Document No. 239538

## Certificate of Location of Government Corner

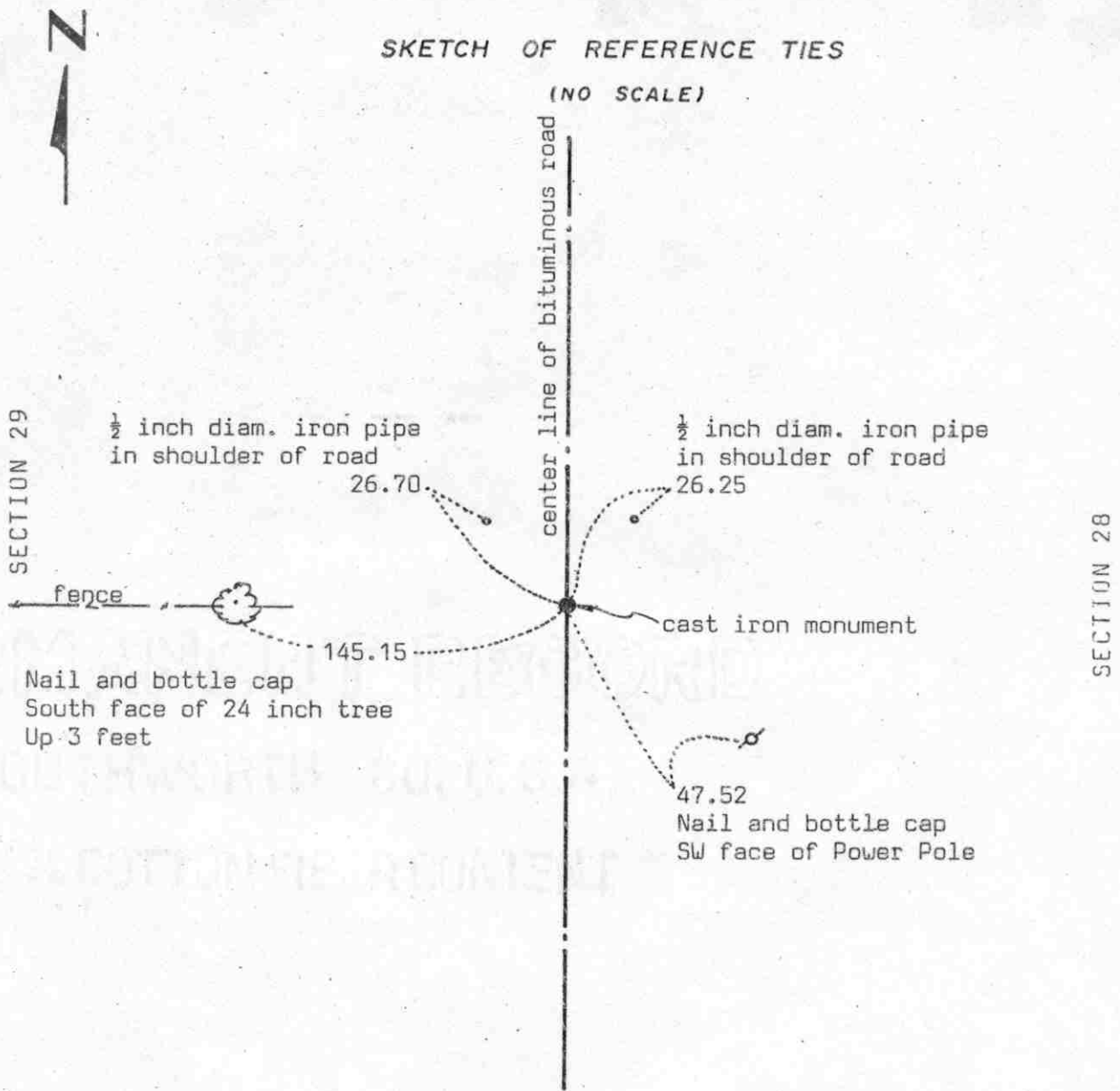
May, 1856. A. H. Runyon of the General Land Office set a post and marked 2 oaks for bearing trees.

May 22, 1990. We set the corner on a proration of government distances and on a straight line between the north quarter corner of Section 28 and the northwest corner of Section 28.

# Certificate of Location of Government Corner

## SKETCH OF REFERENCE TIES

(NO SCALE)



Statement of evidence relative to this corner location on sheet 2

I hereby certify that this document was prepared by me or under my direct supervision.

Willard Pellinen

Willard Pellinen  
McLeod County Surveyor  
License No. 9626

Date 4/8/90

OFFICE OF THE COUNTY RECORDER  
MCLEOD COUNTY, MINNESOTA.

I hereby certify that this document was filed in this office at 8:30 o'clock A.M. on the 22nd day of May, 1990.

Carmen Ostlie, County Recorder

By \_\_\_\_\_, Deputy

Document No. 233490

## Certificate of Location of Government Corner

May 1856. A.H.Runyon of the General Land Office established this corner. He set a post and had reference ties to 2 bearing trees.

1898. E.L.Higgins, surveyor, found an iron post at the corner. He measured 2626 feet to the southeast corner of Section 29 and 1706 feet north to a meander corner.

1967. Lew Merrill, former county surveyor, said there is an iron pin at the quarter corner.

November 2, 1971. McCombs Knutson Associates, Dickman Knutson, county surveyor, found an iron pin at the corner and replaced it with a McLeod County cast iron monument and took reference ties.

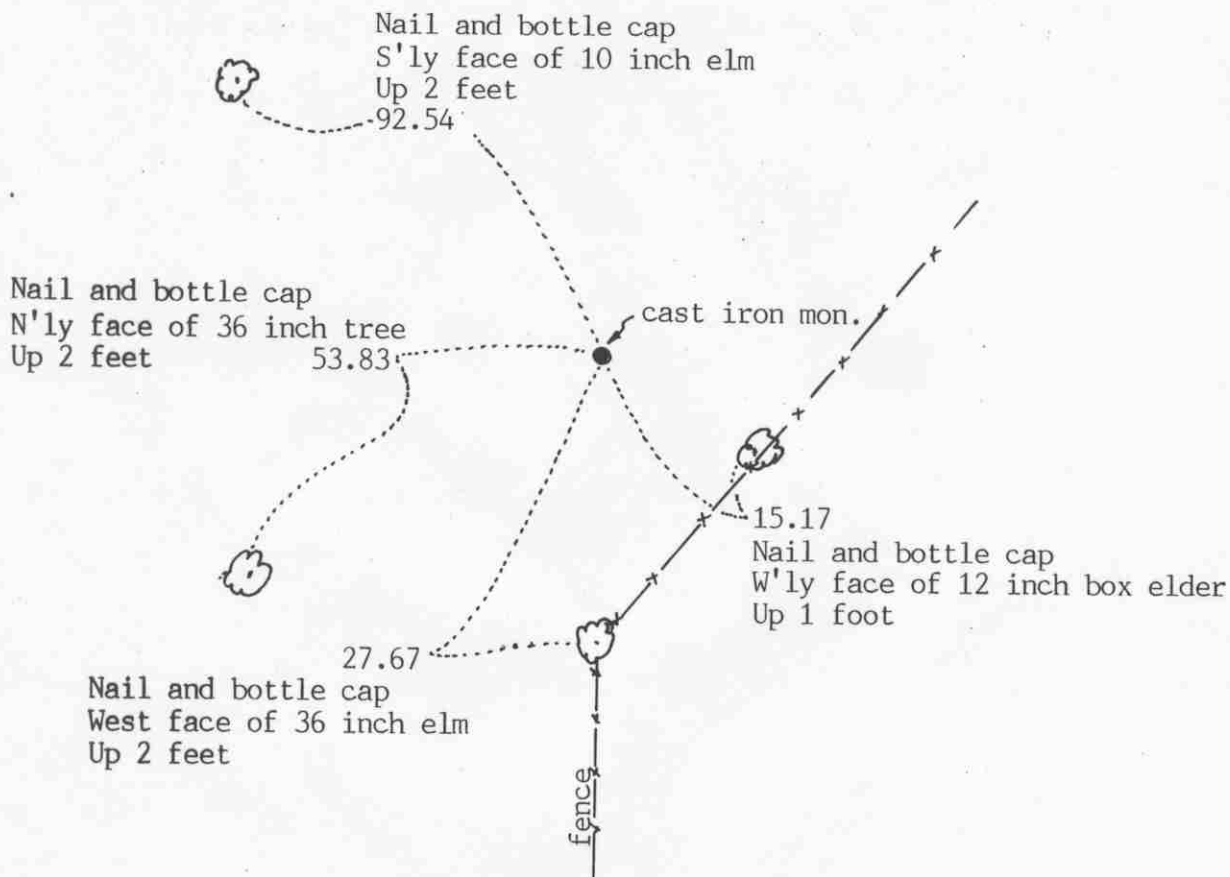
April 29, 1985. We measured the east line of Section 29 and had a distance of 2627.73 feet to the southeast corner of the section and 1705.72 feet to the meander corner north of the quarter corner.

April 3, 1989. We found the monument in good condition down 4 inches below the bituminous surface, but only 1 reference tie remaining. We took additional ties.

We feel the iron pin found by Knutson and later the cast iron monument have perpetuated the correct location of the quarter corner.

# Certificate of Location of Government Corner

## SKETCH OF REFERENCE TIES (NO SCALE)



Statement of evidence relative to this corner location on sheet 2

I hereby certify that this document was prepared by me or under my direct supervision.

Willard Pellinen  
Willard Pellinen  
McLeod County Surveyor  
License No. 9626

Date June 15, 1991

OFFICE OF THE COUNTY RECORDER  
MCLEOD COUNTY, MINNESOTA.

I hereby certify that this document was filed in this office at 9 o'clock A.M. on the 20th day of June, 1991.

Carmen Ostlie, County Recorder

By Thyllis Jopkowsiak, Deputy

Document No. **239539**

## Certificate of Location of Government Corner

May, 1856. A. H. Runyon of the General Land Office set a post and marked an ash and an elm for bearing trees.

December 17, 1898. E. L. Higgins, county surveyor, located the meander corner from a witness tree.

July, 1975. McCombs Knutson Associates (Dickman Knutson, county surveyor) found a rotted wood stake on the northerly extension of a fence. This was 1705.72 feet north of the east quarter corner of Section 29 compared with a distance of 1706 feet by Higgins in 1898.

November 1975. Knutson replaced the wood stake with a McLeod County cast iron monument.

May 22, 1990. We found the cast iron monument in good condition flush with the surface. We took new reference ties.

We believe the wood stake found is the same stake set by Higgins in 1898 and that it has perpetuated the correct location of the meander corner.

NORTHEAST corner, Section 29, Township 117 North, Range 29 West

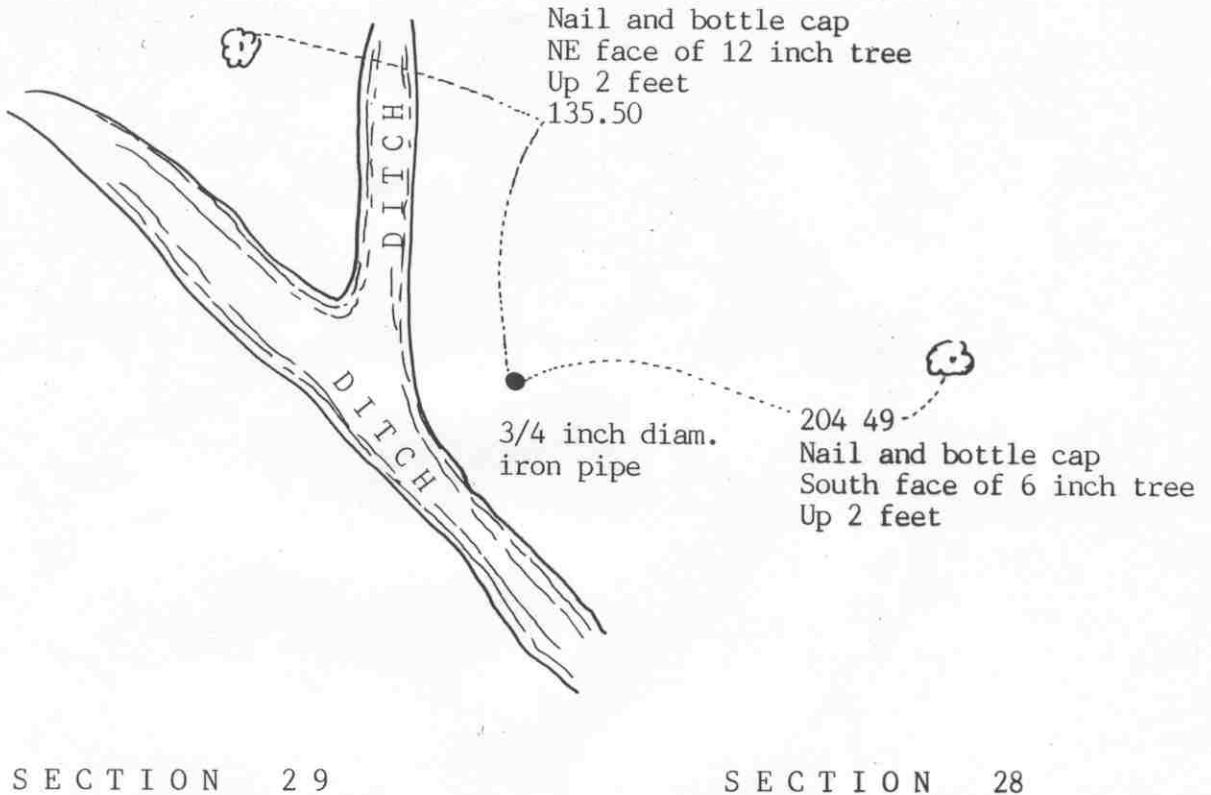
# Certificate of Location of Government Corner

## SKETCH OF REFERENCE TIES

(NO SCALE)

SECTION 20

SECTION 21



SECTION 29

SECTION 28

### Statement of evidence relative to this corner location on sheet 2

I hereby certify that this document was prepared by me or under my direct supervision.

Willard Pellinen

Willard Pellinen  
McLeod County Surveyor  
License No. 9626

Date June 9, 1991

### OFFICE OF THE COUNTY RECORDER MCLEOD COUNTY, MINNESOTA.

I hereby certify that this document was filed in this office at 9 o'clock A. M. on the 20th day of June, 1991.

Carmen Ostlie, County Recorder

By Shyllis Jophowisk, Deputy

Document No. 239540



NORTHEAST corner, Section 29, Township 117 North, Range 29 West

## Certificate of Location of Government Corner

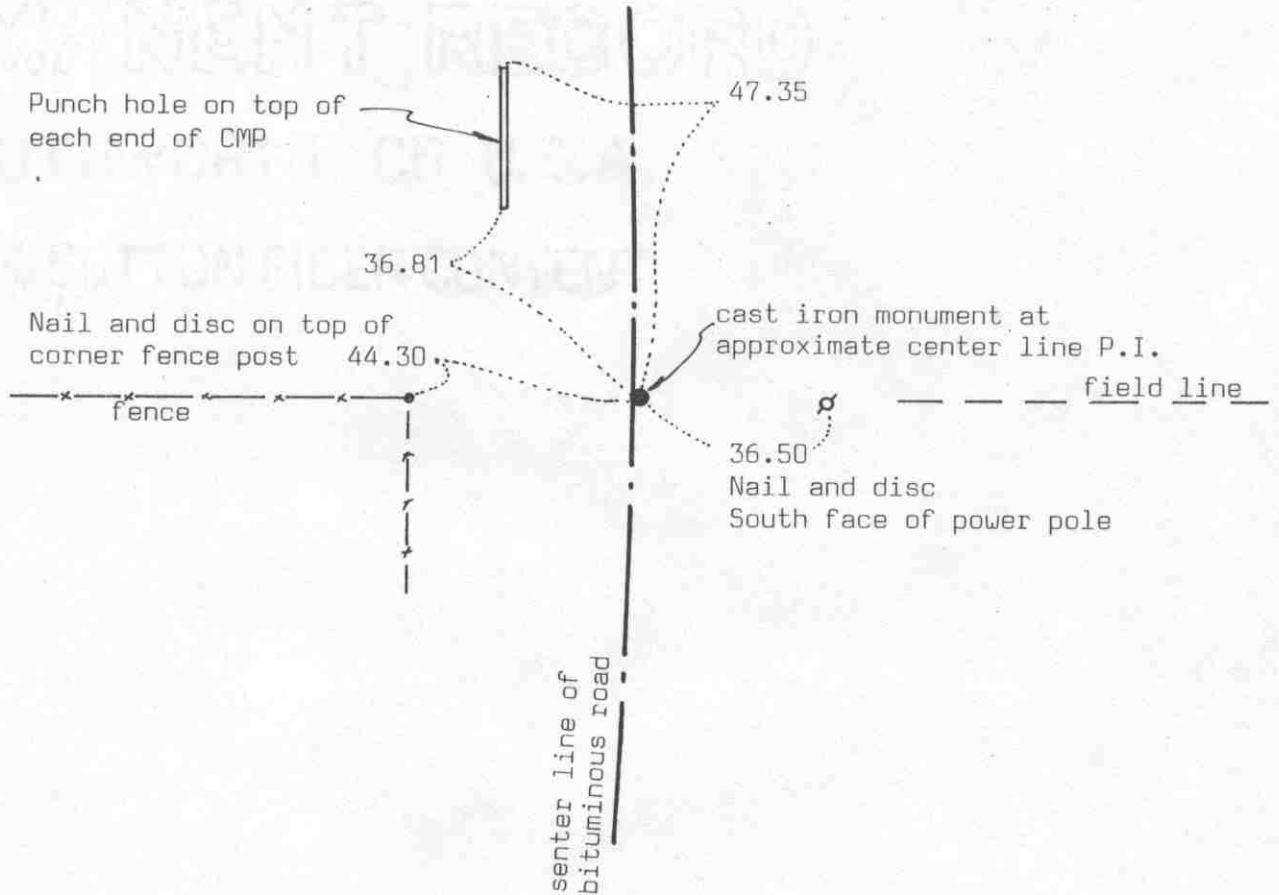
This corner was not established by the original government survey. The corner fell in a lake which is now drained. In July, 1975, we found the meander corner north of the east quarter corner of Section 29. This meander corner was located by E. L. Higgins in 1898 from an old witness corner. Our distance to the meander corner was within 0.3 foot of Higgins' 1898 distance. In February, 1983, we set a 3/4 inch diameter iron pipe at the northeast corner of Section 29 by double proportionate measure between the found meander corner and the east quarter corner of Section 20 and the north quarter corner of Section 29 and the north quarter corner of Section 28.

# Certificate of Location of Government Corner



## SKETCH OF REFERENCE TIES (NO SCALE)

SECTION 20



SECTION 29

Statement of evidence relative to this corner location on sheet 2

I hereby certify that this document was prepared by me or under my direct supervision.

Willard Pellinen

Willard Pellinen  
McLeod County Surveyor  
License No. 9626

Date 5/13/90

OFFICE OF THE COUNTY RECORDER  
MCLEOD COUNTY, MINNESOTA.

I hereby certify that this document was filed in this office at 8:30 o'clock A.M. on the 7th day of June, 1990.

Carmen Ostlie, County Recorder

By \_\_\_\_\_, Deputy

Document No. 233826

## Certificate of Location of Government Corner

May, 1856. This corner was established by the General Land Office. A.H.Runyon set a post and had reference tie to 1 bearing tree.

1919. Lew Merrill, surveyor, found a shale rock and a stake in line with a fence to the west.

April 28, 1921. E.L.Higgins found an oak stake at the corner.

1967. Lew Merrill said there is an oak stake at the corner. He found it in 1919 or 1920.

December 16, 1974. McCombs Knutson (Dickman Knutson, county surveyor) talked with Robert Dobratz, 31 years old and has lived in the Northwest Quarter of Section 29 all his life. He said the fence along the north line his property is on the section line.

February, 1975. Ed Adamek, 69 years old, has owned part of the Northeast Quarter of Section 29 for 20 years, says center line of the road in line with fences east and west is the quarter corner.

March 3, 1975. Knutson set a temporary quarter corner on the approximate center line P.I. of the road, in line with a fence to the west.

May 2, 1975. Knutson dug for the corner and found a rotted wood stake .

July 22, 1975. MKA set a McLeod County cast iron monument at the corner and took reference ties.

April 3, 1989. We found the monument in good condition and the reference ties good.

We accept the monument as marking the correct location of the quarter corner which had been perpetuated by the wood stake.

EAST QUARTER corner, Section 30, Township 117 North, Range 29 West



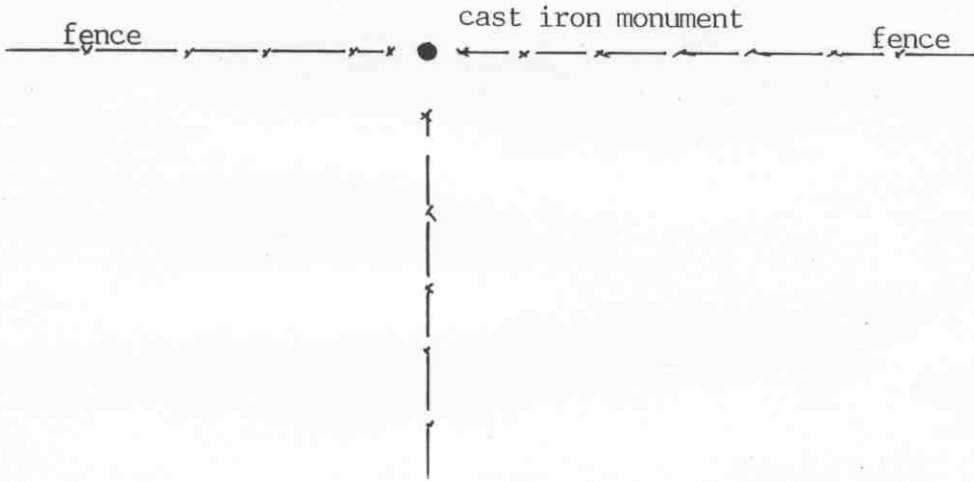
# Certificate of Location of Government Corner

SKETCH OF REFERENCE TIES  
(NO SCALE)

2635.61 feet to the northeast corner of Section 30  
 2594.55 feet to the southeast corner of Section 30  
 5536.49 feet to the west quarter corner of Section 30  
 5226.20 feet to the east quarter corner of Section 29  
 Corner is 2.32 feet east of a straight line between  
 the northeast and southeast corners of Section 30  
 Angle at the quarter corner from the southeast corner  
 to the northeast corner turned on the west side  
 (Section 30 side) is  $179^{\circ}52'12''$

SECTION 30

SECTION 29



Statement of evidence relative to this corner location on sheet 2

I hereby certify that this document was prepared by me or under my direct supervision.

Willard Pellinen

Willard Pellinen  
 McLeod County Surveyor  
 License No. 9626

Date Apr: 17, 1991.

OFFICE OF THE COUNTY RECORDER  
 MCLEOD COUNTY, MINNESOTA.

I hereby certify that this document was filed in this office at 9 o'clock A. M. on the 22nd day of May, 1991.

Carmen O'Brien, County Recorder

By \_\_\_\_\_, Deputy

Document No. 239016

## Certificate of Location of Government Corner

May, 1856. A. H. Runyon of the General Land Office ran the east line of Section 30. The east quarter corner fell in a marsh and Runyon didn't set the corner. He set a witness corner 15 chains north of the corner.

1898. E.L.Higgins, county surveyor, found a stub of a stake at the corner. He measured 2638.3 to the northeast corner and 2591.2 feet to the southeast corner of the section.

1919 field notes show the corner to be at the fence corner.

July 14, 1965. Roy Hansen, surveyor, used the fence corner as the quarter corner, as per testimony from adjacent land owners. He set an iron rod at the corner.

August 16, 1971. McCombs Knutson Associates (Dickman Knutson, county surveyor) replaced the iron rod with a McLeod County cast iron monument and took available reference ties.

May 5, 1990. We found the monument in good condition, all the reference ties destroyed. No ties available.

We accept the old fence corner as having perpetuated the correct location of the quarter corner.

Northeast corner, Section 30, Township 117 North, Range 29 West

# Certificate of Location of Government Corner

## SKETCH OF REFERENCE TIES (NO SCALE)



SECTION 19

SECTION 20

field line

Nail and bottle cap  
East side of tree  
11.70

Steel fence post  
0.80

field line

19.10

Top, center (high point)  
of 2½ foot by 3½ foot rock

0.90  
Steel fence post

Iron monument  
2½ inches square  
on top

SECTION 30

SECTION 29

Statement of evidence relative to this corner location on sheet 2

I hereby certify that this document was prepared by me or under my direct supervision.

Willard Pellinen

Willard Pellinen  
McLeod County Surveyor  
License No. 9626

Date 5/13/90

OFFICE OF THE COUNTY RECORDER  
MCLEOD COUNTY, MINNESOTA.

I hereby certify that this document was filed in this office at 8:30 o'clock A.M. on the 7th day of June, 19 90.

Carmen Ostlie, County Recorder

By \_\_\_\_\_, Deputy

Document No. 233827

NORTHEAST                      corner, Section 30, Township 117 North, Range 29 West

## *Certificate of Location of Government Corner*

May, 1856. A.H.Runyon of the General Land Office established this corner. He set a post and had reference ties to 3 trees.

1898. E.L.Higgins, county surveyor, found an iron post at the corner. He measured 2638.3 feet to the east quarter corner of Section 30.

1967. Lew Merrill, former county surveyor, said there is a square iron monument at the corner.

May 1969. Minnesota Highway Department found a square iron monument at the intersection of fences.

November 23, 1971. McCombs Knutson Associates (Dickman Knutson, county surveyor, found the iron monument and took reference ties. This was at the intersection of field lines.

April 3, 1989. We found the monument and the reference ties still ok.

We accept the found monument as having perpetuated the correct location of the section corner.

NORTH QUARTER corner, Section 30, Township 117 North, Range 29 West

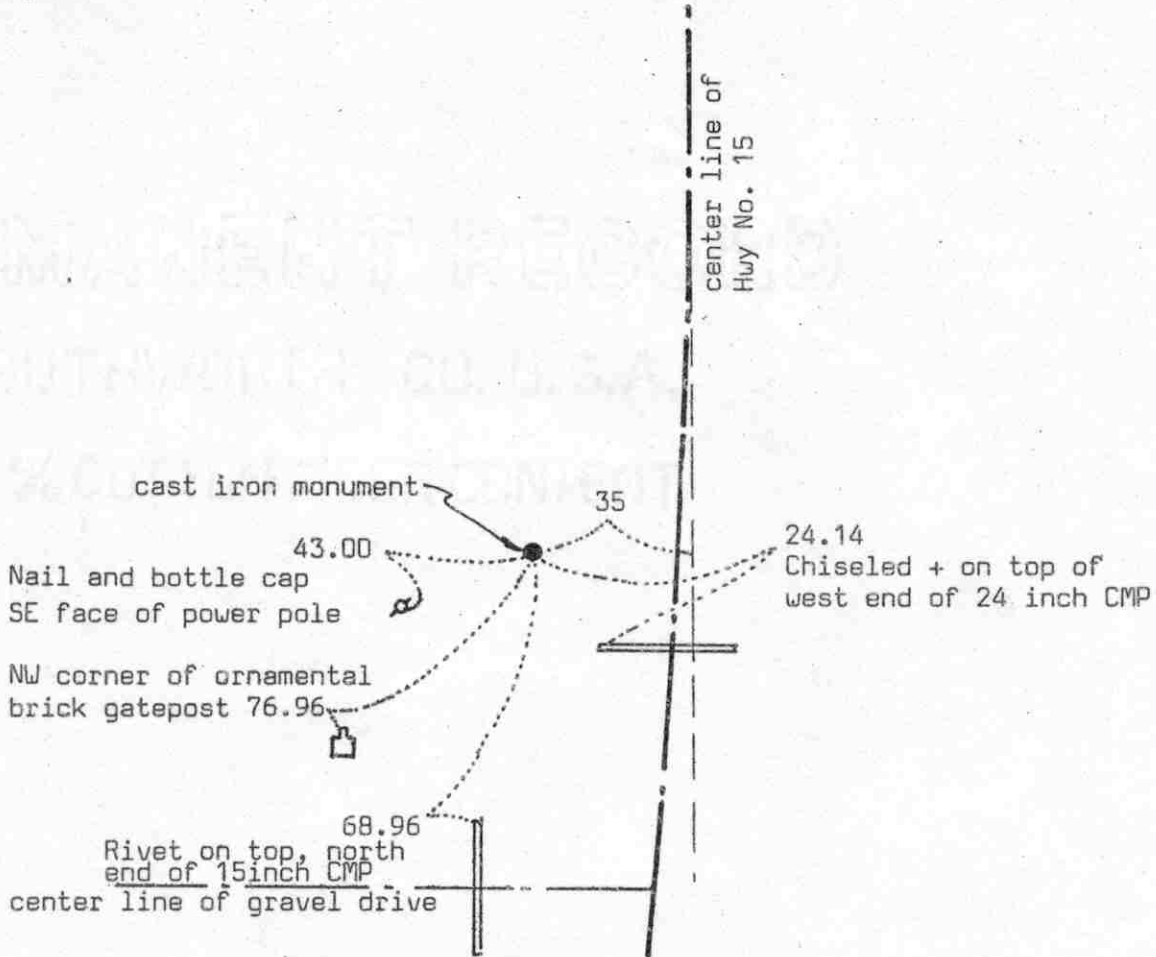
# Certificate of Location of Government Corner



## SKETCH OF REFERENCE TIES

(NO SCALE)

SECTION 19



SECTION 30

### Statement of evidence relative to this corner location on sheet 2

I hereby certify that this document was prepared by me or under my direct supervision.

Willard Pellinen

Willard Pellinen  
McLeod County Surveyor  
License No. 9626

Date 6/2/90

### OFFICE OF THE COUNTY RECORDER MCLEOD COUNTY, MINNESOTA.

I hereby certify that this document was filed in this office at 8:30 o'clock A.M. on the 18th day of June, 1990.

Carman Ostlie, County Recorder

By Jan Petrick, Deputy

Document No. 233933



NORTH QUARTER corner, Section 30, Township 117 North, Range 29 West

## Certificate of Location of Government Corner

May, 1856. This corner was established by A.H.Runyon of the General Land Office. He set a post and had a reference tie to 1 5 inch bur oak.

1898. E.L.Higgins, surveyor, found an iron at the corner. His notes show he measured 2580 feet to the center of Section 30.

August 27, 1922. Carlisle Madson, Sr., surveyor, measured 5184.8 feet to the south quarter corner of Section 30.

April 20, 1920. E.L.Higgins measured 2692.4 feet to the center of Section 19.

November 8, 1971. McCombs Knutson Associates (Dickman Knutson, county surveyor) set a McLeod County cast iron monument 35 west of P.O.S T. as per State Highway No. 15 right of way map.

1987. We measured 2580.70 feet to the center of Section 30, compared with 2580 by Higgins in 1898. We measured 5183.62 feet to the south quarter corner of Section 30 compared with 5184.8 feet by Madson in 1920. We measured 2691.66 feet to the center of Section 19 compared with 2692.4 by Higgins in 1920.

April 5, 1989. We found the cast iron monument in good condition and 2 reference ties remaining. We took additional ties.

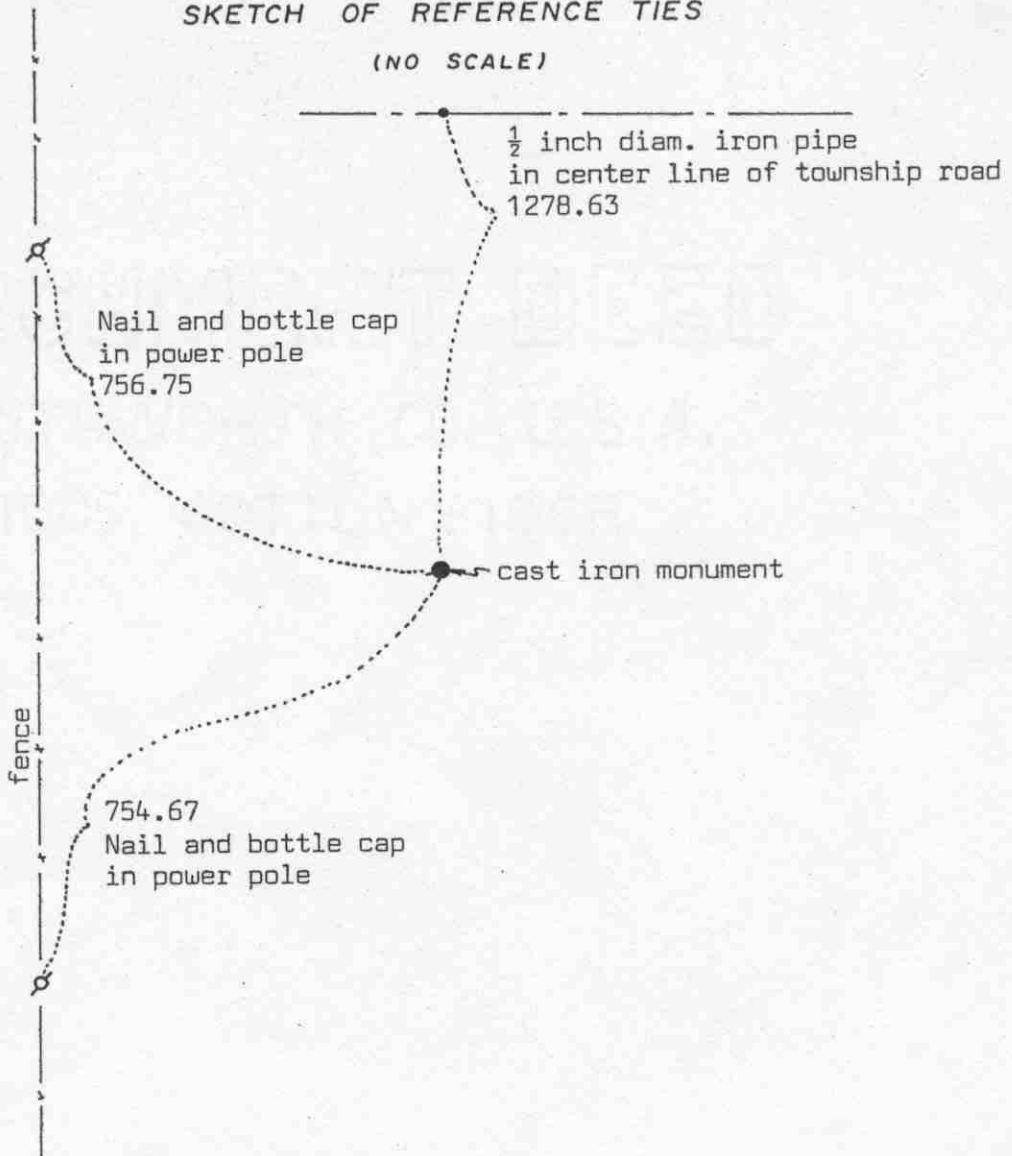
We accept the cast iron monument set by Knutson as marking the correct location of the quarter corner.

GOVERNMENT RECORD  
SOUTHWORTH COUNTY  
SECTION 30 (CORNER)

# Certificate of Location of Government Corner



SKETCH OF REFERENCE TIES  
(NO SCALE)



Statement of evidence relative to this corner location on sheet 2

I hereby certify that this document was prepared by me or under my direct supervision.

Willard Pellinen  
 Willard Pellinen  
 McLeod County Surveyor  
 License No. 9626  
 Date July 16, 1989

OFFICE OF THE COUNTY RECORDER  
 MCLEOD COUNTY, MINNESOTA.

I hereby certify that this document was filed in this office at 2 o'clock P.M. on the 27th day of July, 1989.

Carmen Dotlie, County Recorder  
 By \_\_\_\_\_, Deputy  
 Document No. 229189

NORTHEAST corner, Section 25, Township 117 North, Range 30 West

## Certificate of Location of Government Corner

This corner was originally set by the General Land Office in 1855. John Ryan "set corner to Sections 19, 24, 25 and 30, built mound as per instructions, with deposits of charcoal, planted osage orange seeds at corners of trench."

1920 survey by E.L.Higgins shows this corner lost.

1929 survey by Higgins shows this corner lost.

On July 21, 1969, McCombs Knutson Associates (Dickman Knutson, County Surveyor) set an iron pipe on line and half way between the east quarter corner of Section 24 and the east quarter corner of Section 25. On July 22, 1969, they found a 1 inch diameter iron pipe down  $1\frac{1}{2}$  feet below the surface about 0.7 foot north of the pipe they had set. They repalced the found iron pipe with a McLeod County cast iron monument.

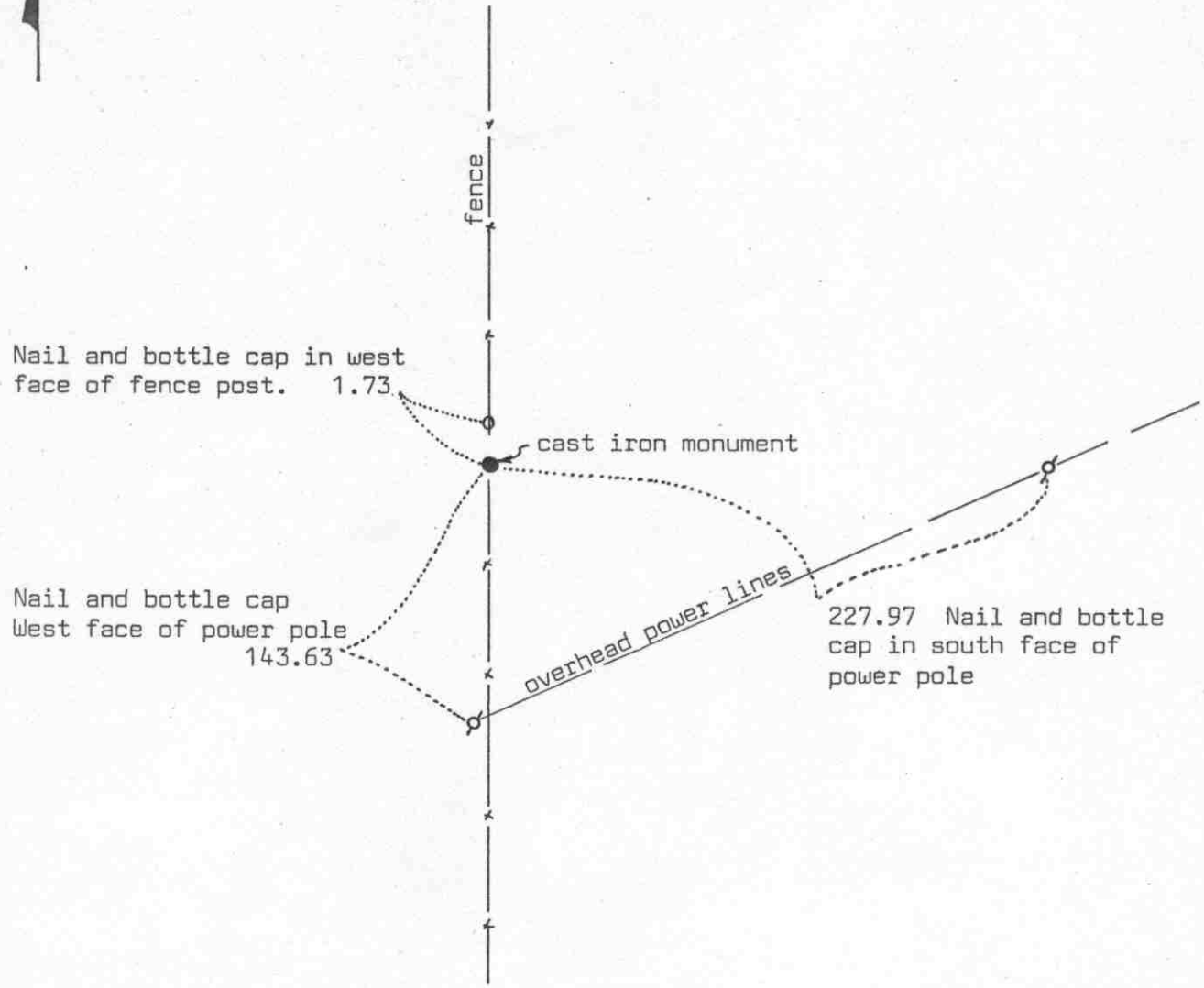
February 22, 1989. We found the cast iron monument in good condition.

We don't know who set the iron pipe found by Dickman Knutson, but we accept it as having perpetuated the correct location of the section corner.

# Certificate of Location of Government Corner



SKETCH OF REFERENCE TIES  
(NO SCALE)



Statement of evidence relative to this corner location on sheet 2

I hereby certify that this document was prepared by me or under my direct supervision.

Willard Pellinen  
Willard Pellinen  
McLeod County Surveyor  
License No. 9626

Date 7/17/89

OFFICE OF THE COUNTY RECORDER  
MCLEOD COUNTY, MINNESOTA.

I hereby certify that this document was filed in this office at 2 o'clock P.M. on the 27th day of July 1989.

Carmen Potlie, County Recorder

By \_\_\_\_\_, Deputy

Document No. 229190

## Certificate of Location of Government Corner

This corner was originally set by the General Land Office in 1855. John Ryan set a post and had reference ties to 2 bearing trees.

April 8, 1966. Roy Hansen, surveyor, use a fence intersection as the quarter corner. Fences running north-south and east.

August 29, 1967. McCombs Knutson Associates (Dickman Knutson, County Surveyor) used the same fence intersection as Hansen. Homer Benjamin, over 60 years old, stated this is the correct corner. He said the fences have been in the same place since he was a young boy.

Knutson set a McLeod County cast iron monument and took reference ties.

February 22, 1989, we found the cast iron monument in good condition, 6 inches below the surface, but the reference ties had all been destroyed. We took new available reference ties.

We feel the fence intersection has perpetuated the correct location of the quarter corner.